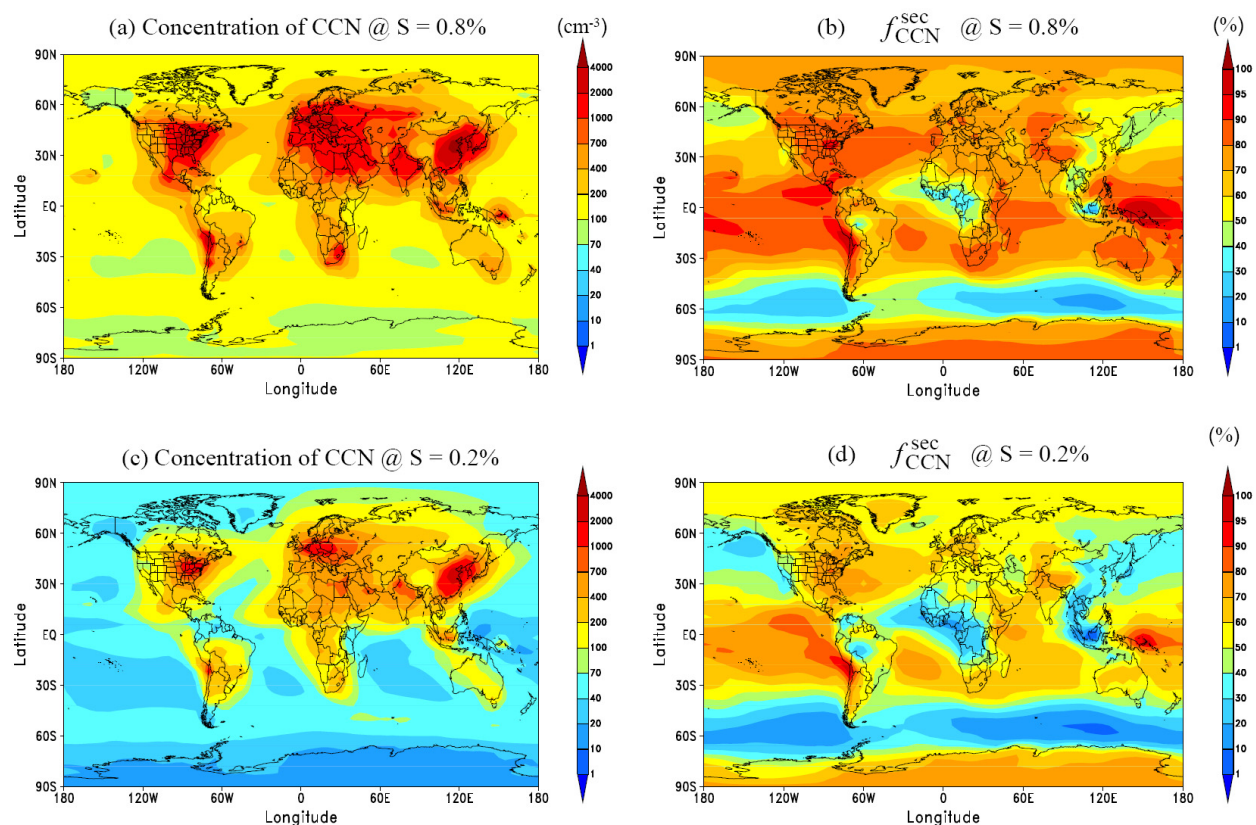


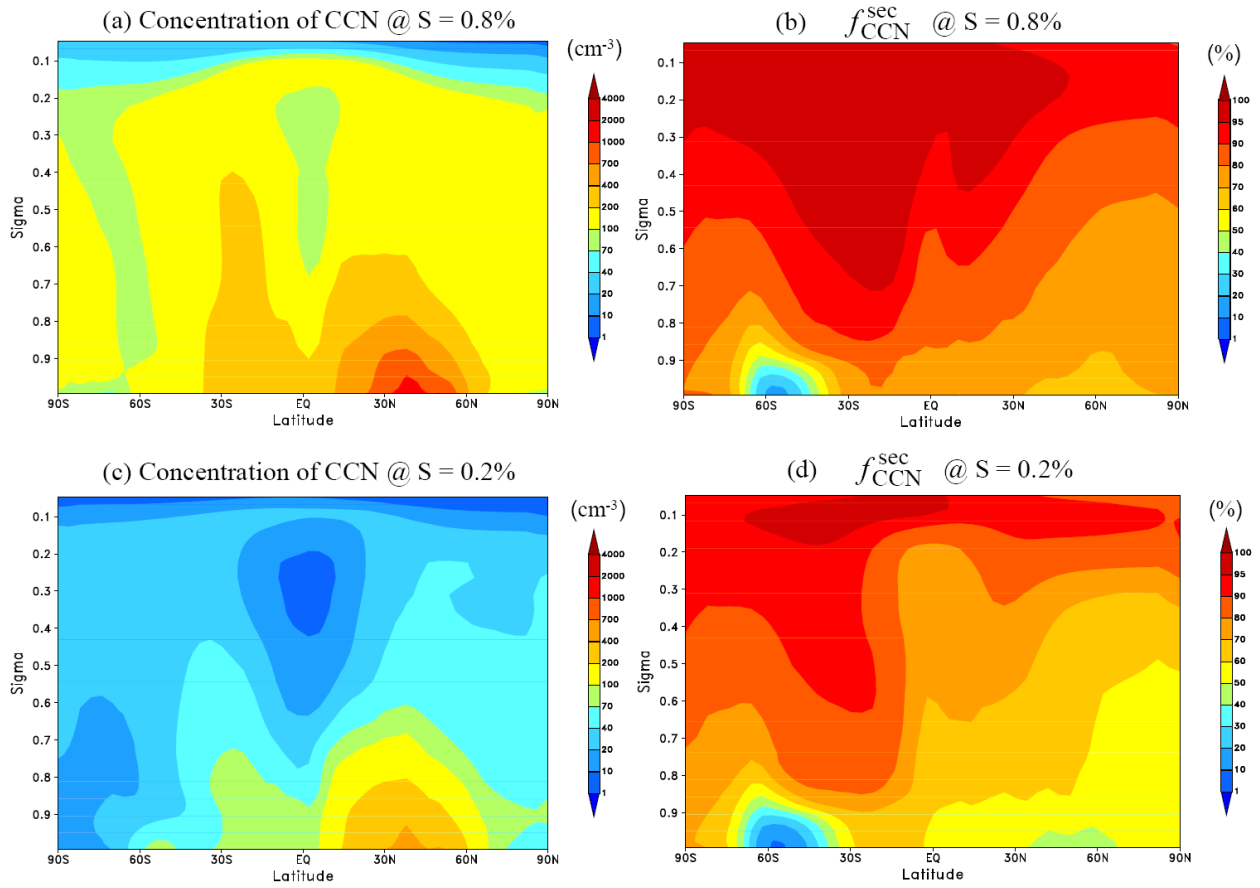
## Supplementary Material

for acp-2009-187 ‘Simulation of particle size distribution with a global aerosol model:  
Contribution of nucleation to aerosol and CCN number concentrations’

by Fangqun Yu and Gan Luo



**Figure S1.** Predicted annual mean CCN concentration at supersaturation of: (a)  $S = 0.8\%$  (CCN0.8), and (c)  $S = 0.2\%$  (CCN0.2) in the boundary layer (0-1 km). The corresponding fractions of CCN0.8 and CCN0.2 that are secondary ( $f_{\text{CCN}}^{\text{sec}}$ ) are given in (b) and (d).



**Figure S2.** Zonally-averaged latitudinal and vertical distributions of annual mean values of CCN0.8 and CCN0.2, and the corresponding  $f_{CCN}^{sec}$ .